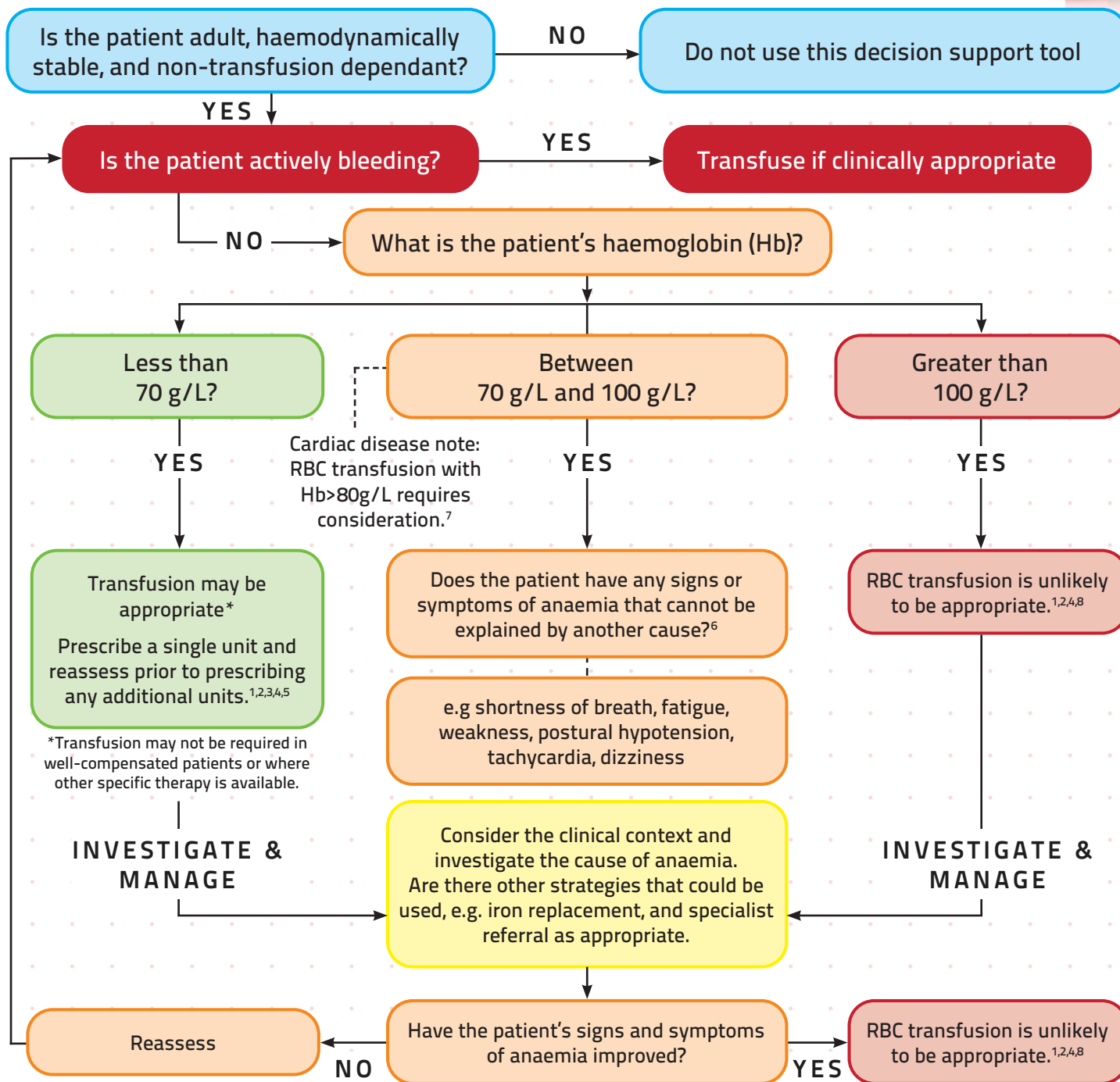


SINGLE UNIT TRANSFUSION DECISION SUPPORT TOOL



For each red blood cell unit



ONLY prescribe one unit at a time.
Then reassess the patient's need for further transfusion based on signs and symptoms of anaemia.

Rationale — Patient Blood Management Guidelines
 Module 2 – Perioperative PP2⁵, PP3⁴
 Module 3 – Medical PP2⁹, PP3¹, PP5³, PP6⁷
 Module 4 – Critical Care PP1⁶, PP3², PP4⁸

For more information
 PBM Guidelines <https://www.blood.gov.au/pbm-guidelines>
 Single Unit Transfusion Guide
<https://www.blood.gov.au/single-unit-transfusion>

For support

Pathology Laboratory.....

Haematologist on call.....

Blood Management/Transfusion Nurse.....

.....

Other.....

.....



Abbreviations
 PBM — Patient Blood Management
 RBC — Red Blood Cells; Hb - haemoglobin
 To be read in combination with the Patient Blood Management Guidelines