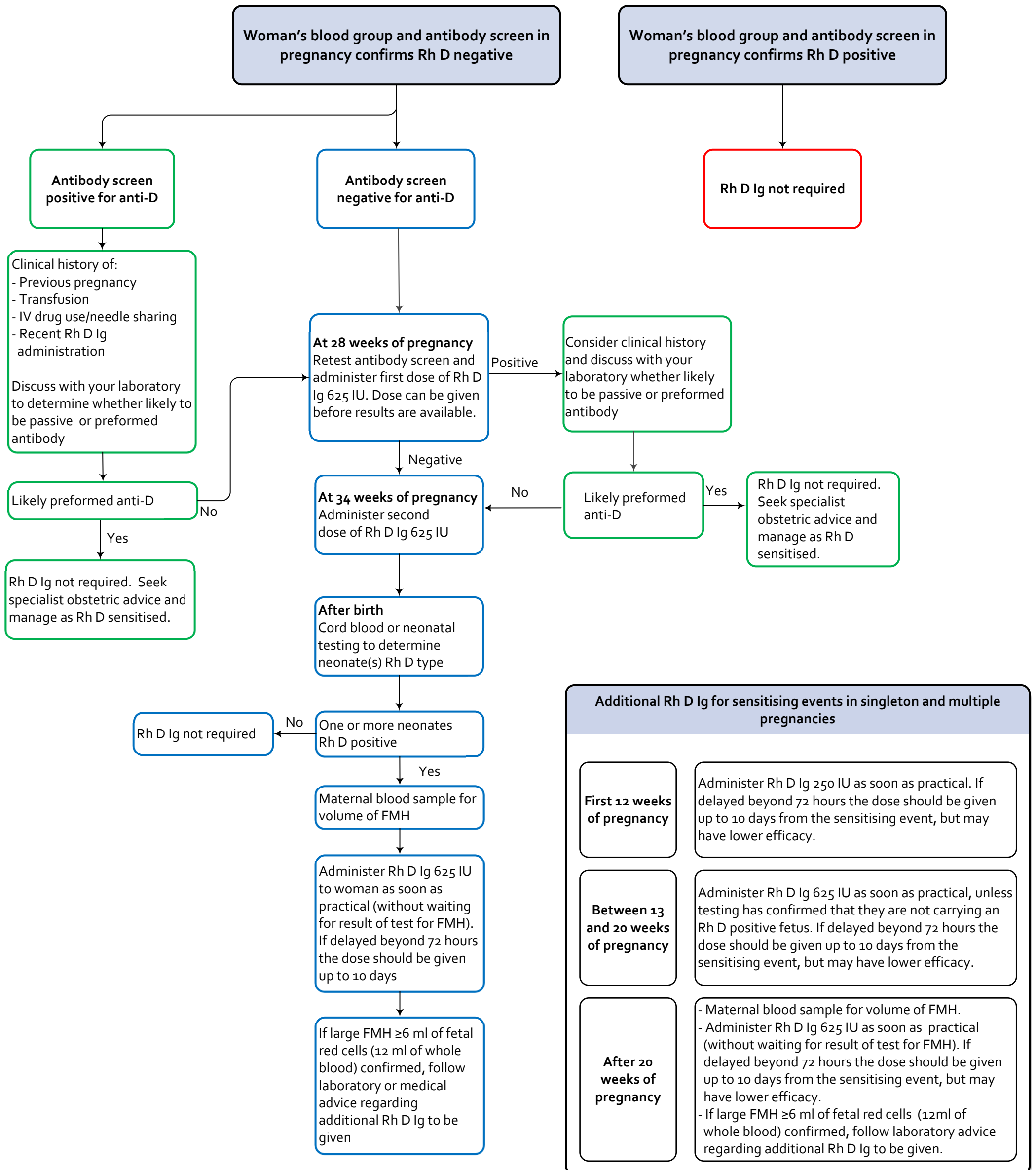


Care pathway for the prophylactic use of Rh D immunoglobulin in pregnancy care (excluding non-invasive prenatal testing (NIPT))



FMH, fetomaternal haemorrhage; Ig, immunoglobulin; IU, international units; IV, intravenous.

anti-D - refers to circulating antibodies; *RHD* - refers to genotype; Rh D positive/negative - refers to blood type.

This care pathway is a snapshot of the clinical guidance contained within the *Guideline for the prophylactic use of Rh D immunoglobulin in pregnancy care*. This version of the care pathway does not include guidance related to the use of non-invasive prenatal testing (NIPT). An alternative care pathway that includes the use of NIPT is available at <https://www.blood.gov.au/anti-d-o>

This pathway is designed to be adapted to meet the needs and operations of individual organisations.

Adapted from NSW Health (2015)