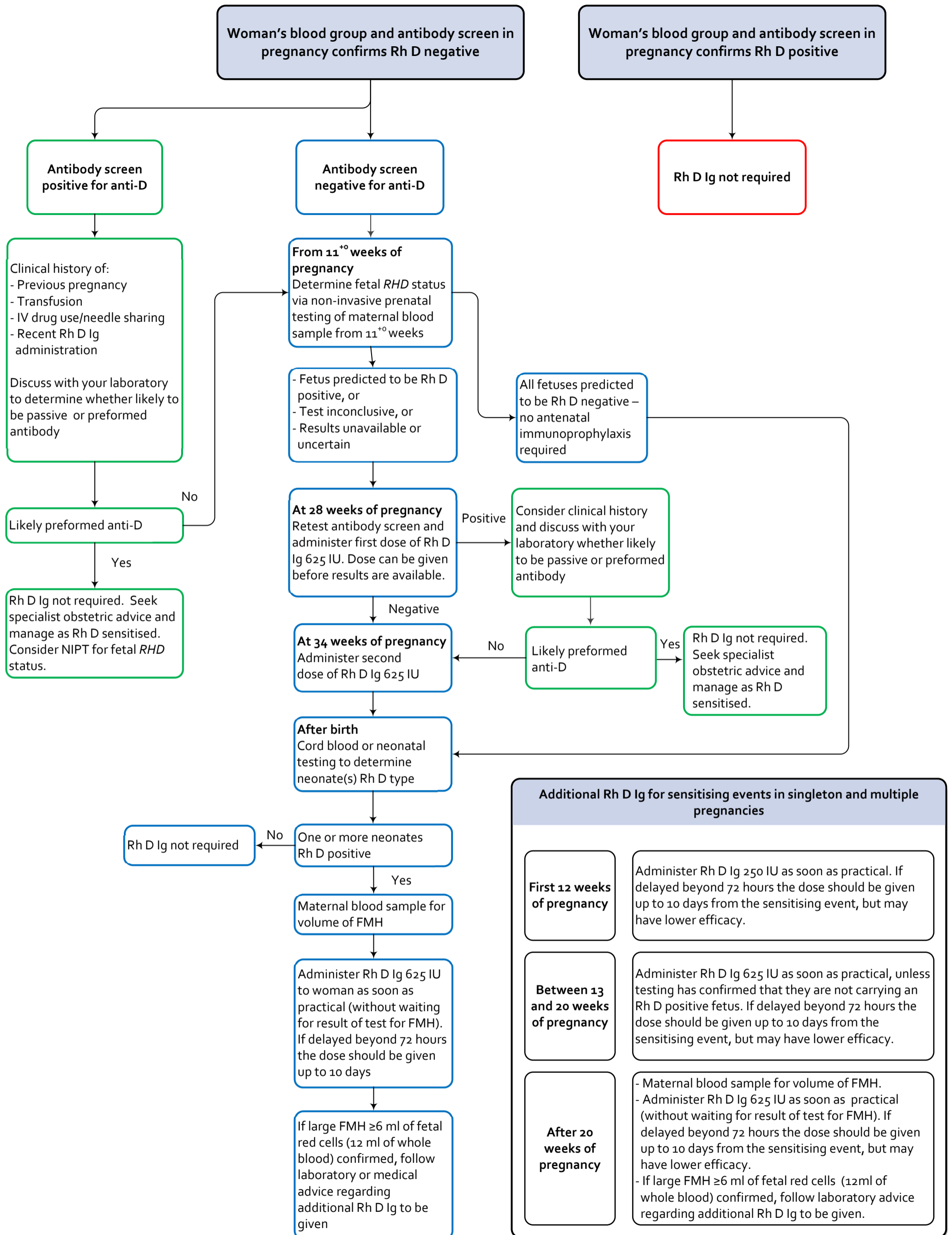


Care pathway for the prophylactic use of Rh D immunoglobulin in pregnancy care (including non-invasive prenatal testing (NIPT))



FMH, fetomaternal haemorrhage; Ig, immunoglobulin; IU, international units; IV, intravenous.

anti-D - refers to circulating antibodies; *RHD* - refers to genotype; Rh D positive/negative - refers to blood type.

This care pathway is a snapshot of the clinical guidance contained within the *Guideline for the prophylactic use of Rh D immunoglobulin in pregnancy care*, which is based on clinical evidence and expert consensus. Policy relating to universal access to NIPT for fetal *RHD* is outside the scope of the guideline. This pathway is designed to be adapted to meet the needs and operations of individual organisations.

Adapted from NSW Health (2015)